

The Good News

MONTHLY PUBLICATION JULY 2023 VOLUME 43 NUMBER 7

IN THIS ISSUE

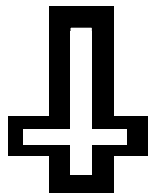


A Note From Pastor Laherty	Pg. 2
Heart And Hands Outreach	Pg. 3
What's 4 Lunch, Ladies?!	Pg. 3
Blood Drive.....	Pg. 6
Parish Education	Pg. 4
Joy Circle Women's Bible Study.....	Pg. 5
Elroy Scholarship Fund Award	Pg. 5
July Bible Readings	Pg. 5
Thank You for Serving Through Emanuel	Pg. 6
Preschool Graduation Pictures.....	Pg. 7
Talent Show Potluck Picnic Pictures	Pg. 7
Easy Ways to Support Emanuel Financially	Pg. 8
July Calendar	Pg. 9
Pray for One Another	Pg. 10
June Birthday & Anniversaries	Pg. 11
Children's Activities Page	Pg. 12
VBS Registration Form.....	Pg. 13
VBS Registration Volunteer Form	Pg. 14

address label here

DATED MATERIAL
Please Deliver by 2nd or
3rd of the month.

SUNDAY WORSHIP SERVICE
9:00AM & 10:45 AM
SUNDAY SCHOOL
11:00 AM
PRE-SCHOOL DIRECTOR:
Jonine Sodders
Spanish Worship is offered at 2:30 pm by House of Faith.
E-mail: churchinfo@elch.org
Website: www.elch.org



RETURN SERVICE REQUESTED
Church: (562)691-0656 Preschool: (562) 694-5316
150 North Palm Street, La Habra, California 90631
Emanuel Evangelical Lutheran Church

This last month I did something I'd never done before. I officiated at the funeral of a dear friend. On Saturday June 19, Emanuel hosted a funeral service for Pastor John Santoro. John was known to several in the congregation as he had supplied on a few Sunday mornings during the interim. John was diagnosed with metastatic cancer over Memorial Day weekend and died 17 days later. By the time the last day came, John received his final wish, being pain free and greeting the Lord in His kingdom.

John had written his funeral service over the last five years. He was very specific about how he wanted the liturgy to flow. He did write at the top of the first page of his notes that changes could be made if necessary. There was in fact only one minor change to what John had written.

If you attended the service, you witnessed a couple of differences from any service you have attended at Emanuel. Since John had supplied on Sunday mornings at Episcopal congregations as well as having friendships with our Episcopal brothers and sisters, there were five priests assisting with the service from that denomination. In addition, the person who spoke the commendation at the end of the service was the Rt. Rev. Ed Little, former Bishop of the Northern Indiana Diocese. As the presiding minister, I wore a chasuble since Communion was a part of the service. Chasubles are worn in a few Lutheran Churches but is a usual garment for Episcopal priests at Communion. The history of the chasuble goes back to the early church. They basically serve as an apron for the Lord's supper.

Erik, the funeral director from Memory Gardens, was asked by several people, "why was the pall covering the casket placed backwards with the cross facing the wrong way". Actually, this too, was an ancient custom. The pall was placed correctly. The casket was placed so that John was facing the congregation as he would have as he was conducting worship. That is an ancient tradition for the burial of priests.

John was a friend of mine for 48 years. Following his instructions for the funeral was a final act of friendship. It's also a gift to those who knew him. John was a faithful pastor who greatly appreciated the historical liturgy. Leaving instructions for his funeral was really helpful for everyone involved. We all knew that the service is what he wanted.

One final note; leaving behind instructions for one's funeral is an excellent idea. By making those preparations, the family can receive comfort knowing that the person who died was laid to rest in peace. I do have a file with people's preferences noted in my office . It really is a good idea.

Pastor Dennis Laherty



HEART AND HANDS OUTREACH SHARING THE GOOD NEWS!

“Feed My Sheep” – John 21

OPPORTUNITIES ABOUND TO SERVE GOD BY SERVING OUR NEIGHBORS!

FOOD FOR OUR HUNGRY NEIGHBORS

Delivery to Food Bank at Lutheran Church in Fullerton – Delivered on May 30. Two carts were full of food. They were very grateful. This is a truly needed and amazing ministry. With the discontinuance of the COVID food subsidy on April 1, more people than ever, especially seniors, need food

Here are the specific requested items: (Packages designed for families)

- 1 or 2 pound bags of rice (they use 100 every week)
- 12 – 16 oz. plastic jars of peanut butter (crunchy preferred)
- 12 – 16 oz. packages of any variety of pasta
- Canned tuna or chicken
- Shelf stable milk (almond or soy – no refrigeration required)

HAHO will help with food prep, food purchase, registration, greeting, etc. at the VBS Compassion Day camp on Saturday, July 29.

Do you know of a worthwhile project our need within our community? Please let us know! We thank all of the Emanuel members for continuing your love and support for our neighbors in this community!

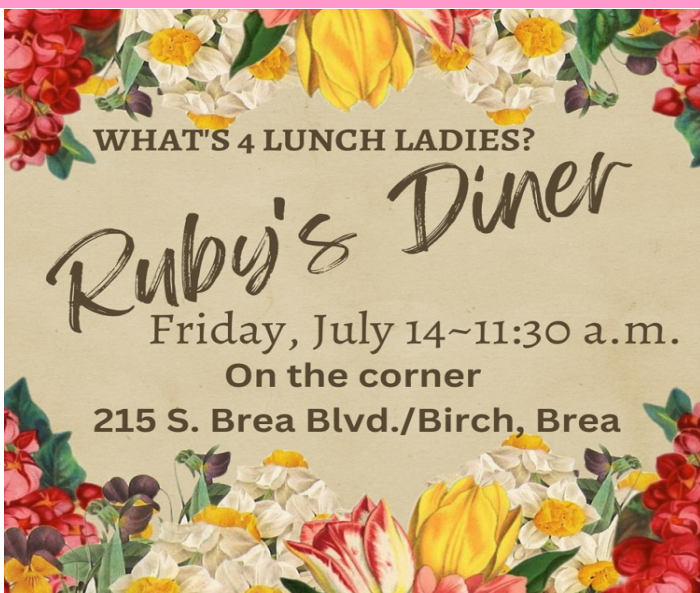
*****IF YOU WANT TO HELP WITH THESE COLLECTIONS OR DELIVERIES,
PLEASE LET US KNOW. WE'D LOVE TO HAVE YOU.
THE JOY AND SATISFACTION OF HELPING OUR NEIGHBORS IS THE BEST GIFT*****

Jeanette Parr
Facilitator



Deeana Eley and her helper Don at the Food Bank

**The next HAHO meeting is
SATURDAY, August 12 at 10 am.
*** We would love to have you there! *****



BLOOD DRIVE Emanuel Lutheran Church

Location: Moerer Hall
150 N. Palm Street
La Habra, CA 90631

**Monday, July 24, 2023
12:00p.m.-6:00p.m.**

PICTURE ID REQUIRED AT REGISTRATION AND DURING HEALTH EXAM.
Please schedule an appointment online by visiting www.redcrossblood.org and enter sponsor code: **EMANUELLC** or call 1-800-RED-CROSS.



FROM THE BOARD OF PARISH EDUCATION



Come join Sunday School in-person each Sunday at 10:00 AM!
Kids three years through sixth grade meet in Moerer Hall
Visitors are always welcome!

Sunday School

Now that we have one worship service at 10:00 AM, come join us and worship together with your kids. During coffee hour at 11:00 there are planned activities for the students. For Father's Day we made a project with clay and rocks that said "DAD ROCKS." We rehearsed for the talent show and learned about Mary and Martha from Luke 10. Join us in Moerer Hall after each service.

Offering

Our Summer focus will be to help our neighbors by donating food for hungry people who are in our communities! Donations will be delivered to the Food Bank at First Lutheran Church in Fullerton. Students can bring pasta, tuna, chicken, peanut butter, rice, or money which will be used to buy these items. Let's surprise everyone with how much the kids can do to help the people who are struggling and will benefit from this service!

Talent Show

The youth were invited to join the Praise Band in singing "Sing Wherever I Go." This is a song with so much energy and spirit!

Compassion Day Camp — Vacation Bible School-Saturday, July 29 9am-1:30pm.

- This summer we will have a **One Day Saturday Day Camp!**
- The theme is "**Compassion Camp: Be Loved. Be Kind. Be You.**" Through the story of Elijah in the wilderness, participants will explore the importance of caring for ourselves when we have needs.
- Please consider volunteering to help with food, snacks, leading crafts, games and activities. What Fun!

Please invite friends and family to join us for "Compassion Camp" July 29th

Please continue to pray for the spiritual growth of our youth and adults.

Parish Ed Team



EMANUEL LUTHERAN CHURCH 562 691-0656
AGES 3 THROUGH ENTERING 6TH GRADE



JOY CIRCLE WOMEN'S BIBLE STUDY 9:30 – 11 AM MONTHLY ON 3RD MONDAY

MONDAY, JULY 17

Summer Study "Salvation Now" by the Rev. Dr. Anna Madsen



Session Two: Tangible Salvation Now—Christians Bringing Wellness

Following Jesus means expressing our solidarity with Jesus and his mission, in all we do. Because Jesus is the bringer of salvation, in his name, so, too, are we. Where there are wounds and brokenness, we are called to bring Jesus and the salvation he embodied. Together we'll examine the biblical and theological reasons for not waiting for it to all come out in the wash later, but for us to become faithful ambassadors of Jesus' salvation now.

- Bring your Bible and join us the 3rd Monday of each month in the Library
- New to the group?? Email the church office churchinfo@elclh.org. A copy of the study is emailed the week before.
- If you prefer to join us via Zoom, be sure to call/email the church office ahead of time.

NOTE: refreshments start at 9:30 & we stop for prayer at 11 am

The Elroy Schoppa Scholarship Fund Award

Congratulation to Logan Crabb who was presented the Elroy Scholarship Award that contributed to his ongoing studies at Mt. San Antonio College. If you know a student who is interested in receiving information on how to apply for the Scholarship, please contact the church office churchinfo@elclh.org.



~ SUNDAY BIBLE READINGS ~

July 2

Jeremiah 28:5-9
Psalm 89:1-4,15-18
Romans 6:12-23
Matthew 10:40-42

July 9

Zechariah 9:9-12
Psalm 145:8-14
Romans 7:15-25a
Matthew 11:16-19,25-30

July 16

Isaiah 55:10-13
Psalm 65:1-13
Romans 8:1-11
Matthew 13:1-9,18-23

July 23

Isaiah 44:6-8
Psalm 86:11-17
Romans 8:12-25
Matthew 13:24-30,36-43

July 30

1 King 3:5-12
Psalm 119:129-136
Romans 8:26-39
Matthew 13:31-33,44-52



THANK YOU FOR SERVING CHRIST THROUGH EMANUEL!

Scripture says that we ARE Christ's body in the world, God's hands and feet. God has given ALL of us gifts for ministry and when we use those gifts together, God is glorified!

Each month we want to lift up a few people in our congregation that have gone "the extra mile" in helping us be Christ's Church. Please call or email the church office (churchinfo@elclh.org) to suggest others who might be thanked in future newsletters!

THANK YOU TO . . .

- ~ All serving as ushers, greeters, readers and communion servers, sound booth, the chancel choir and the praise band
- ~ Janine Ward for leading Joy Circle every month
- ~ Robyn Ospital and everyone who helped with the luncheon for Pastor John Santoro
- ~ Pastor Laherty for visiting our shut-ins and bringing them communion
- ~ Jill Drummond for always making Emanuel visible on our social media
- ~ Stephanie Young for organizing and leading Emanuel's Talent Show and Concert. All the volunteers helping with set up, clean up and bringing food to share at the Picnic Potluck. All who will share their talents and plan to come share in a wonderful time of fellowship and fun!
- ~ Mary Ann Carlson, Cindy Reyes and Susan Wright for organizing our upcoming VBS camp
- ~ Jill Drummond and Sharon Frazier for organizing What's 4 Lunch Ladies each month
- ~ Jonine Soddors for the cute sanctuary decorations and the wonderful promotion ceremony for our preschoolers moving to kindergarten in the Fall.
- ~ Stephanie Young for always picking our weekly music for our worship services
- ~ Volunteer counters who help process and deposit our offering each week
- ~ Jeanette Parr who is always helping take care of Emanuel with her many volunteer hours
- ~ Ricki Fehr, Jerry Schnakenberg and Jeanette Parr for helping us save cost all year
- ~ John Ospital for updating the Elroy Schoppa Scholarship guidelines for future students
- ~ Jill Drummond for helping edit Newsletters and bulletins each week

You 



TO WORSHIP WITH US ONLINE AND VIA LIVE STREAM, GO TO

- Emanuel's website: <http://elclh.org>
- YouTube: Emanuel Lutheran Church La Habra
<https://www.youtube.com/channel/UC4Fu6qvPdYF2MM92JzoU9uA>
- Facebook: Emanuel Evangelical Lutheran Church
<https://www.facebook.com/emanuel.lutheran.1>

**Closed captioning is available on both YouTube and Facebook.
Visit Emanuel's website or find us on Instagram
(emanuellahabra) for upcoming events and information.**

Preschool Graduation Ceremony



Emanuel's Annual Talent Show



FREE STUDY BUDDIES TUTORING RESUMES SEPTEMBER 12 TUESDAY & THURSDAY, 3-4:30 PM



Study Buddies, our FREE tutoring program for grades 1-6, meets at Emanuel on Tuesdays and Thursdays from 3-4:30 PM in the Hope Center Library.

If you'd like to contribute to the fun, they are always in need of snacks for the kids. Lunch box size bags of chips and drink boxes are supplied to our students while they study.

Invite a friend or neighbor! Flyers are available at Sunday's Welcome Table.

Questions? Call Jill Drummond (714-403-0956).



Emanuel Lutheran Preschool Now Enrolling



Emanuel Lutheran Preschool is enrolling students!

- Our preschool is open all year-round.
- We are a state licensed, non-profit organization dedicated to providing an atmosphere of love and acceptance in which all children are encouraged to develop to their fullest potential.
- Our teachers are dedicated to support and inspire your child's progress.
- Daily activities include motor development, social skills, and language skills to benefit your child at their appropriate level.

If you or someone you know is looking for child care reach out to preschool director Jonine Soddors (562)694-5316 or email

EmanuelPreschoolLaHabra@hotmail.com

~ PRAYER ~

**GOD'S WORD TELLS US
IT IS THE MOST
POWERFUL FORCE GOD
HAS ENTRUSTED TO US!**



*Have a prayer request for
yourself or others?*

Call or email the church office and we will share it with the Prayer Team.

*Want to make time to pray
with others?*

Consider joining the Prayer Group in person in the Youth Room or via Zoom 8:30-9:30 AM Saturday mornings.

Want to be part of the Prayer Team?
Contact the church office.

**YOUR GIVING
MATTERS!**

EASY WAYS TO SUPPORT EMANUEL FINANCIALLY

Thank you for your financial gifts to God through Emanuel Lutheran Church!!! Below are 4 ways to give:

- Entryway offering plate
- Mail to the Church Office
- "Giving" link online at www.elclh.org
- Text dollar amount to 562-210-0007

Our bank has recently notified us how checks must be written in order to be accepted. We are asking for your assistance to avoid future checks being refused.

- Checks must be made payable to **EMANUEL LUTHERAN CHURCH** (full name written out)
- Checks are to be written using **blue or black ink only** (other colors not acceptable)
- Make sure the **number in the amount is the same as the amount written in words** (\$100.00 = one-hundred and no/100 dollars)
- **Sign Your Check**
- Please indicate in the memo line if the check is for a specific ministry.

Thank you SO MUCH for your assistance. If more convenient, you may also give online through our website (www.elclh.org) under the Giving tab or through text message (see above).

Thank you for your continued generous support through your offerings.

JULY 2023

SUNDAY	MONDAY	TUESDAY	WEDNESDAY	THURSDAY	FRIDAY	SATURDAY
2 10a Blended Worship (S) 11a Sunday School 12:45-7p HOF(S/C/H/Y/1-4)	3 Church Office Closed 9a HOF (4) 7p HOF (4) 7:30p AA (H)	4 Fourth Of July Church Office Closed	5 9a Bible Study (Z) 10a Bridge Club (H) 7-10p HOF (S) 7:30p At-Anon (C)	6 10a Book Club (Z) 6-9:30p AA (H) 7-9p HOF (4)	7 6-10:30p HOF (S) 7:30-8:30p HOF (1-4, Y) 8p AA (H)	8 8:30a Prayer Group (Y) 6-9p HOF (4)
9 10a Blended Worship (S) 11a Sunday School 12:45-7p HOF(S/C/H/Y/1-4) 12:45-7p HOF(S/C/H/Y/1-4)	10 4p Stephen Ministry (C) 9a HOF (4) 7p HOF (4) 7:30p AA (H)	11	12 9a Bible Study (Z) 10a Preschool Brd (C) 10a Bridge Club (H) 7-10p HOF (S) 7:30p At-Anon (C)	13 10a Book Club (Z) 6-9:30p AA (H) 7-9p HOF (4)	14 7:30-8:30p HOF (1-4, Y) 8p AA (H)	15 8:30a Prayer Group (Y) 6-9p HOF (4)
16 10a Blended Worship (S) 11a Sunday School 12:45-7p HOF(S/C/H/Y/1-4)	17 9:30a Joy Circle 9a HOF (4) 7p HOF (4) 7:30p AA (H)	18 5:30p Council Mtg (L/Z)	19 "Good News" Deadline 9a Bible Study (Z) 10a Bridge Club (H) 7-10p HOF (4) 7:30p At-Anon (C)	20 10a Book Club (Z) 6-9:30p AA (H) 7-9p HOF (4)	21 7:30-8:30p HOF (1-4, Y) 8p AA (H)	22 8:30a Prayer Group (Y) 5:30-10:30p HOF (S)
23 10a Blended Worship (S) 11a Sunday School 12:45-7p HOF(S/C/H/Y/1-4)	24 12-6p Blood Drive (H) 7p HOF (4) 7:30p AA (H) Last Day for VBS Registration	25	26 9a Bible Study (Z) 10a Bridge Club (H) 7:30p At-Anon (C)	27 10a Book Club (Z) 6-9:30p AA (H) 7-9p HOF (4)	28 7:30-8:30p HOF (1-4, Y) 8p AA (H)	29 8:30a Prayer Group (Y) 6-9p HOF (4) 9a-1:30p VBS Compassion Camp
30 VBS Sunday 10a Blended Worship (S) 11a Sunday School 12:45-7p HOF(S/C/H/Y/1-4)	31 7p HOF (4) 7:30p AA (H)	Emanuel Lutheran Church: 150 N. Palm Street, La Habra, CA 90631 • Phone 562-691-0656, Fax 562-691-8897 www.elclh.org • Preschool: 562-694-5316 SUNDAY WORSHIP: Traditional 9:00 a.m. • Praise 10:45 a.m. • Sunday School: 10:00 a.m. <i>At-Anon meets in Moerer Hall Wednesdays @ 7:30 pm; AA meets in Moerer Hall Mondays @ 7:30 pm and Fridays @ 8:00 pm.</i> Legend: C: Hope Center Classroom; CH: Chapel; F: Fireside Room; H: Moerer Hall; L: Hope Center Library; S: Sanctuary; Y: Youth Room; Z: Zoom				



In Our
Hearts
& Prayers

PRAY FOR ONE ANOTHER ~ JULY 2023

*** Save this for reference throughout the month. ***

“Be joyful in hope, patient in affliction, and faithful in prayer.” Romans 12:12

Special Prayer Focus for This Month

~ God’s Holy Spirit would be stirred in every one of God’s children at Emanuel that we would each find new ways to share God’s love with the people around us with courage and boldness

Continuing Prayers

- | | | |
|-----------------------------|----------------------|-------------------|
| ~ Ruth Fehr | ~ V.J. Roberts | ~ Stephanie Young |
| ~ Sharon Frazier | ~ Dan Toussaint | ~ Shelley Reesman |
| ~ Mischelle and John Uhlman | ~ Jerry Schnakenberg | ~ Charlotte |
| ~ Maiju and Wolfgang Hessel | ~ Chuck Holtzendorff | ~ Cathy Spangler |

Assisted Living Centers/Homebound

- | | | |
|--|-------------------------------|--------------|
| ~ Shirley Jordan – Park Vista | ~ Eric Sessing – Mirada Hills | ~ Jean Arata |
| ~ Margaret Roberts – Addie’s Cottage Anaheim | ~ Lee Reitzel – Emerald Court | |
| ~ Ruth Wolfarth | | |

Friends and Family to Remember

- | | |
|--|--|
| ~ Ruth Ann Kiszka (Celeste Templeton cousin) | ~ Matt Rossoni (Doris Rossoni stepson) |
| ~ Mike Petrelli (Doris Rossoni son) | ~ Jesse Valdez |
| ~ Jay recovering after heart transplant | ~ Dani, Luke, Jane & family |
| ~ Abigail and Belinda and her family | ~ “Mo” & Andy |
| ~ Diana Holzendorff and family | |

Prayers of Thanksgiving

- ~ Emanuel’s staff, for all the musicians, worship assistants, altar care, sound, video and other volunteers who make it possible for us to worship God in person and online
- ~ For God’s great and extravagant love for us that offers welcome and forgiveness that changes our lives and world
- ~ For the opportunities to gather and invite others to worship God, study the Bible and serve our neighbors in person and online
- ~ For Emanuel’s church and preschool staff who support all of us in sharing our gifts as we serve Christ and our neighbor and lead ministry together
- ~ For Church Council, ministry leaders throughout Emanuel who often serve God quietly, humbly and sacrificially, always seeking to glorify God and not themselves
- ~ We give thanks for the gift of summer, of time for rest and renewal and for all who use this time to encourage and bring hope to those who are weary, broken, lost, frightened or alone.

If you have prayer concerns to add to Emanuel’s list, please contact the church office at (562) 691-0656. Once a month, names will be removed from the list that have been in print at least eight consecutive weeks (except those who request extended prayer). You are welcome to re-submit any names removed from the list, or you may remove a name at any time by contacting the church office. Thank you.

Birthdays and Anniversaries July 2023

BIBLE STUDY OF MARK

WED 9-10 AM

****No experience needed!!***

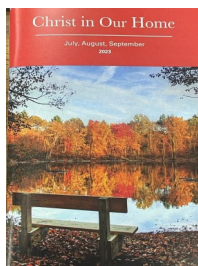


Mark's Gospel is a narrative proclamation that Jesus is the Messiah and Son of God, whose death and resurrection paid the penalty for our sins and achieved victory over Satan, sin, and death. With this joyful announcement comes the call to all believers for faith and cross-bearing discipleship

Call or email the church office at churchinfo@elclh.org to receive the Zoom link. All you need is a computer, tablet or smartphone.

CHRIST IN OUR HOME JULY/AUG/ SEP NOW AVAILABLE

This quarterly devotional resource encourages us to live out our faith daily.



Each reflective reading is accompanied by a daily scripture reference and prayer for the day that follows the Revised Common Lectionary. Booklets are available in the church entryway or office.

Email churchinfo@elclh.org if you would like a copy mailed to you.



The 2nd Mile Giving Envelope for July is:

*Lutheran Retreat,
Camps & Conferences*

Kid's Korner

Puzzle!

Fill in the blanks with the correct words. Then transfer the letters to the numbered boxes below to complete Psalm 107:1, NIV.

Shape that symbolizes love
31 15 7 18 5

Part of a stove used for baking
12 3 24 39

Color made by red and yellow
28 42 7 8 27 37

A present
1 32 20 11

Clothing a girl wears
19 22 43 44 33

Something you open to go into a room
40 29 17 47

Opposite of soft (sound)
34 17 41 30

To take a long walk
14 2 9 38

A high body temperature
45 50 49 48 42

Items used to build or fix things
13 35 21 16 26

Edge of the sea
10 23 46 51 4

Home for a bee
6 25 36 4

1	2	3	4	5	6	7	8
9	10	11	12	13	14	15	16
17	18	19	20	21	22	23	24
25	26	27	28	29	30	31	32
33	34	35	36	37	38	39	40
41	42	43	44	45	46	47	48
49	50	51	52	53	54	55	56

Answer: heart, oven, orange, gift, dress, door, loud, hike, fever, tools, shore, hive; Give thanks to the LORD, for he is good; his love endures forever. Psalm 107:1, NIV



Creator of the stars

The stars and sky testify to God's amazing power and creativity.

Directions: Use the clues and Bible passages to fill in the blanks. Then transfer the circled letters (in order) to the spaces below to complete a verse of praise.

God determines this and calls each star by name. (Psalm 147:4)

The heavens are the work of God's what? (Psalm 8:3)

What does God bring out one by one? (Isaiah 40:26)

God made two great lights to do this. (Genesis 1:16)

God promised Abraham this would be like the stars. (Genesis 15:5)

The sun, moon and stars have this. (1 Corinthians 15:41)

The lights in the sky serve as what? (Genesis 1:14)

The heave s declare the lory f od;
the ski s roc aim the wo k of his ha ds.

PSALM 19:1, NIV

Answer: number, fingers, host, govern, offspring, splendor, signs; The heavens declare the glory of God; the skies proclaim the work of his hands. Psalm 19:1, NIV



EMANUEL LUTHERAN CHURCH 2023 COMPASSION DAY CAMP

9 am to 1:30 pm SATURDAY, JULY 29

Emanuel Lutheran Church
150 N. Palm Street, La Habra, CA 90631
email: churchinfo@elclh.org phone (562)691-0656

**“Compassion Camp—CHANGING THE WORLD
WITH LOVINGKINDNESS”**

Saturday, July 29
Sunday, July 30

9 am-1:30 pm (includes lunch)
**10 am Worship with singing performance
by Compassion Camp kids**

Children Ages 3 (potty-trained) through those entering 6th grade
Youth & Adults Those entering 7th grade and up are welcome to volunteer

**Join us for Compassion Camp
Changing the World with Lovingkindness**

Please pre-register by Monday July 24, 2023

COST IS \$5 PER CHILD OR \$10 PER FAMILY

SCHOLARSHIPS AVAILABLE

TOTAL ENCLOSED \$ _____ APPLY FOR SCHOLARSHIP Yes / No

LOVINGKINDNESS

NAME OF CHILD	AGE	GRADE ENTER- ING	Allergies

EMERGENCY INFORMATION

Parent/Guardian Names _____

Address _____ City _____ Zip _____

Home Phone _____ Cell _____ Email _____

Emergency Contact Name _____ **Phone** _____

Relationship of Emergency Contact to Child _____

In case of an emergency and we **cannot** reach you or an Emergency Contact person, does Emanuel Lutheran Church have your permission to make medical decisions for the above listed minor(s) until we are able to reach the parent or emergency contact person?

Yes /No (circle) _____ Date _____

(parent/guardian signature)



EMANUEL LUTHERAN CHURCH 2023 VACATION BIBLE SCHOOL

9 AM - 1:30 PM SATURDAY, JULY 29
**“Compassion Camp—CHANGING THE WORLD
WITH LOVINGKINDNESS”**

Compassion Camp is where kids (3 years and potty trained through entering 6th grade) explore what it means to have compassion for others, ourselves, and the world. The Compassion Camp components bring the themes of compassion to life in unique and engaging ways for each participant as they explore how these themes relate to each session’s scripture.

All entering 7th graders through adult are encouraged to volunteer with snacks, crafts, teaching a lesson, helping run games, or set-up/clean-up. Earn community service credit hours!

**If you are interested in being a volunteer helper, please fill out and return this form to Emanuel Lutheran Church 150 N. Palm Street, La Habra, CA 90631
Email: churchinfo@elclh.org phone: (562) 691-0656**

Contact the church office for more information. God Bless!

VBS Volunteer Sign Up Form

Name _____ Jr. High / High School / Adult (circle one)
Phone _____ Email: _____

Preferred method of communication: call / text / email (circle preference)

Emergency Contact Name _____

Relationship to volunteer _____ **Phone** _____

Volunteer interest(s):

- _____ Small Group Leader/Assistant
- _____ Food Servers/Assistant Chef
- _____ Donate Food (head chef will contact you in July with food needs)
- _____ Registration Helper
- _____ Music and Opening
- _____ Games & Recreation
- _____ Crafts
- _____ Clean-up
- _____ Wherever I am needed



Must be signed by parent/guardian for Volunteers under 18:

In case of an emergency, and we **cannot** reach you or an Emergency Contact person, does Emanuel Lutheran Church have your permission to make medical decisions for the above listed minor(s) until we are able to reach the parent or emergency contact person?

Yes /No (circle) _____ Date _____
(parent/guardian signature)