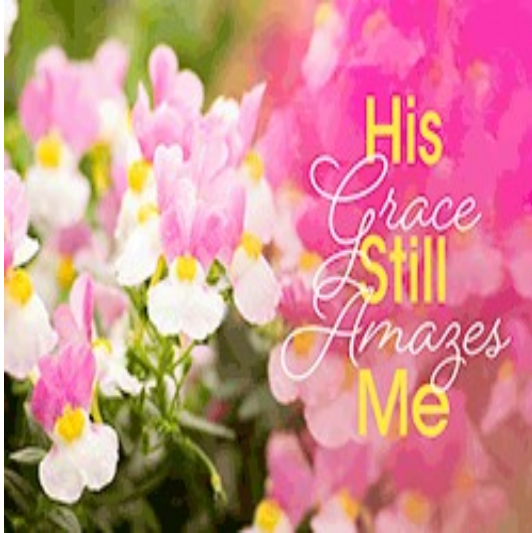


# The Good News

MONTHLY PUBLICATION JULY 2025 VOLUME 65 NUMBER 7

## IN THIS ISSUE

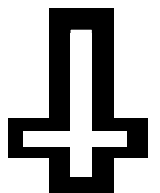


A Note From Pastor Laherty .....	Pg. 2
Church Council .....	Pg. 3
Heart And Hands Outreach .....	Pg. 4
Thank You for Serving Emanuel.....	Pg. 5
Blood Drive .....	Pg. 6
St. Jude's Closet .....	Pg. 7
What's 4 Lunch, Ladies? .....	Pg. 8
Men of Emanuel Fellowship Breakfast .....	Pg. 8
Sunday Bible Readings .....	Pg. 8
Parish Education .....	Pg. 9
Kids Summer Music .....	Pg. 10
Compassion Camp.....	Pg. 11
VBS Sign Up Form.....	Pg. 12
VBS Volunteer Sign Up.....	Pg. 13
Joy Circle Women's Bible Study.....	Pg. 14
Emanuel Lutheran Preschool is Enrolling.....	Pg. 15
Pray for One Another .....	Pg. 16
July Calendar .....	Pg. 17
July Birthdays & Anniversaries .....	Pg. 18
Bible Study.....	Pg. 18
Children's Activities .....	Pg. 19

address label here

DATED MATERIAL  
Please Deliver by 2nd or  
3rd of the month.

SUNDAY WORSHIP SERVICE  
10:00 AM  
11:00 AM  
PASTOR:  
Dennis Laherty  
Jonine Soders  
PRESCHOOL DIRECTOR:  
Spanish Worship is offered at 2:30 pm by House of Faith.  
E-mail: churchinfo@elch.org  
Website: www.elch.org



**RETURN SERVICE REQUESTED**  
Church: (562)691-0656 Preschool: (562) 694-5316  
150 North Palm Street, La Habra, California 90631  
*Emanuel Evangelical Lutheran Church*



---

## Pastor's July Newsletter Notes

The third Saturday of the month has become Burrito Day at the church. A group of people come together, make burritos and pack them so they can be taken to those in the community who are hungry.

Unfortunately, it's not difficult to find those people. This past Saturday was a good example. The burritos, which originally took nearly two hours to prepare, are now completed in just under an hour. A workable number for the people giving them out is around 15. They are placed in a thermal container along with bottles of water, into the one or two cars going out, and off we go on our monthly trek.

After a few weeks of delivering burritos, finding the recipients has become rather easy. There are a few familiar places where street people seem to congregate. Last Saturday, burritos were taken to the metro station at Orangethorpe and Magnolia. As the benches are situated in a line, it was easy to find takers. Eight burritos were given out at this one location. Determining who receives them is easy. One question is asked, "Are you hungry?" It is still amazing to me how quick a response comes back. A resounding YES. There are times that the person will quickly open the foil and begin devouring the burrito. There have been a few times when the person will say, "I haven't eaten since yesterday." But for most, they don't need to say a word. It's clear this is the first meal in some time.

The next standard question we ask is, "Is there anything you want us to pray with you about?" Again, the response is usually immediate with some specifics. At the top of the list is housing, overcoming addiction and the need for a job. There really is a sincerity on the person's behalf that they really want the prayer. They're not just saying it to please the burrito people. Often you can see the person's faith surface as he or she prays along or sometimes even offers a prayer of thanks for the burrito and water.

It's such a rich ministry. It's rich for the recipient because the person gets some food. It's also rich for the people from the church because the response validates the need for this ministry that has become a rich part of our lives.

The Burrito Ministry as it's called is listed each month in the calendar. Come and join us even if it's to see what it's all about. Usually it's on the third Saturday, but again, consult the church calendar for sure.

*Pastor Dennis Laherty*

## YOUR CHURCH COUNCIL



Have you ever wondered why we have a Church Council or what they do? In addition to meeting every month, they work every week to make sure their areas of responsibility are taken care of. We are a corporation, which means we must meet certain regulatory criteria, over and above our Christian responsibilities.

Our Council Members:

Vice President, Marsha Maynard – coordinates with outside groups, including House of Faith, on usage, times, maintenance issues, etc. and keeps the calendar of all groups in order.

Secretary – Kerry Ospital – takes minutes, signs official documents, and makes sure we maintain our legal requirements.

Treasurer – Jerry Schnakenburg – works with our bookkeeper to make sure everything is reported correctly; monitors our financial status on a regular basis, interacts with our bank to monitor our investments and interest rates, works on the annual budget, makes sure giving statements are correct and timely.

Congregational Life – Carl Pulley – works on facilities management, and other issues which may arise, and with Kevin Garcia has begun Men's Ministry.

Caring Ministries – Kevin Garcia – works on Men's Ministry with Carl Pulley; has responsibility for HAHO, Pre-School, Parish Ed reporting and follow-up.

Support Facilities – Susan Wright – serves as liaison regarding music and worship practices.

President – (and Parish Admin) – Jeanette Parr – works with all Council Members, Volunteers, Outside Vendors as needed.

Pastor Laherty and Assistant Minister Pulos– Lead Emanuel in all Christian worship and practices and serve as guideposts for all of us.

If you have questions about any of the responsibilities or wish to participate, please let us know. You are welcome!

Your Church Council is happy to hear from you and encourage you to be part of the process. If you are interested in serving on Council, please contact Celeste Templeton, who is current chair of the Nominating Committee.



## HEART AND HANDS OUTREACH SHARING THE GOOD NEWS!

*"Feed My Sheep" – John 21*

### JULY/AUGUST HAHO OUTREACH

For the next two months our outreach focus will be to help St. Jude's in aiding the unhoused community with backpacks and new or slightly worn tennis shoes. We often buy shoes, wear them a few times and decide they don't work and they sit in our closets. This is the place to bring them! There are often great deals on new ones if we keep our eyes open too. Most needed are men's size 11 and larger and women's size 7 and larger. Please no children's sizes!

Any questions regarding acceptable items to be given, please contact Sharon Frazer.

In regard to needed backpacks, HAHO funds generously given by you will be used to purchase them. We thank each one who has given to that particular fund.

Please do not ever forget giving to the food bank! Sadly, there are always many in need of food. We thank you for your generous giving in June and we will keep you posted of any particular needs.

We are always looking for new people to join the HAHO committee. We will meet again in August or contact Janine Ward or Jeanette Parr with questions. Thank you Emanuel for your continuing generosity!



FOOD  
&  
CLOTHING  
NEEDED





Big thanks to Lilly for using all of her skills and personal wi-fi to enable us to function electronically while we waited for a part for our new wifi in the church office. We were without wi-fi for more than a week!

Thanks to our computer guru, Peter Kelmis, who worked with Jack Ward to get everything installed and running again.

Thanks to Amy Nuss, Stephanie Young, and Kevin Wiley for all of the special music.

Thanks to Susan Wright and Denise Whitcher for the Summer Music Program for our children. The Father's Day song was great!

Thanks to the "J Team"...Jack Ward, Jerry Schnakenberg, and John Ospital who are always ready and willing to help out with the many issues that come up with our facility.

Thanks to Janine Ward for leading Bible Study when needed with Pastor Laherty and Assistant Minister Amanda Pulos.

Thanks to Jonine Soddors, our faithful Pre-School Director, who takes care of a million things when no one else is here.

Thanks to everyone at Emanuel who faithfully brings food for the Caring Hands Foodbank so our neighbors can be fed and for the St. Jude Closet so they can be clothed.

Thanks to our Church Council who work tirelessly behind the scenes to make sure we have everything we need to be done through Emanuel on behalf of our Lord.



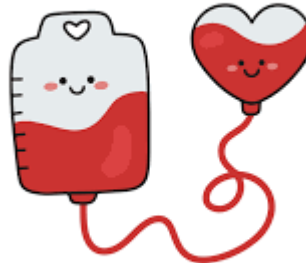




**I'm excited to update you on the Red Cross Blood Drive.  
We had 18 units of blood donated.  
Thanks to all who donated and  
helped so many people during these  
difficult times.**



**SAVE THE DATE**



**SAVE LIVES!**

**Next blood drive will be on  
Monday, September 8, 2025.**



## St Jude Closet

St Jude Medical Center has a community closet that supplies clothes to patients and homeless in need. Emanuel, through HAHO, has decided to take on the task of helping to keep that closet stocked. Here's where you can help. Check your closets for the following items you aren't using and bring them to church – **gently used**, please. A collection box will be available in the narthex.

This list of requested clothing will also be on the narthex table, so pick one up on your way in or out of church if you need a new one. We do ask that you stay within the list as we've received some items that we weren't able to take such as dresses, women's shorts/skirts, and children's clothes. Any questions about items on the list, please call Sharon Frazier

### **The following are in HIGH need:**

Men's pants sizes 28-34 and 44-48. Men's shirts sizes M, XXL

Men's jackets sizes L, XL, XXL, XXXL

Women's pants sizes 20+

Women's sneakers sizes 8 and above / Tube socks

Men's sneakers sizes 10 and above / Tube socks

There is an ongoing need for the following:

Men's and Women's casual clothing (gently used, no stains or holes)

Men's and Women's jackets/coats (Men's are in high demand)

Undergarments (new only)

Belts/Scarves/mittens/beanies/backpacks/totes/ponchos (no wallets or purses please)

Shoes (Men's are in high demand)

Also, if you have crutches, walkers, canes, or manual wheel chairs you no longer need, they will be glad to take them. A tax donation letter is available upon request.

This project is being coordinated through HAHO. If you have questions, please call Sharon or Jeanette.





Join us at Arthur's Coffee Shop  
1281 E. La Habra Blvd.

## MEN'S BREAKFAST



SATURDAY, JUNE 7 @ 8:00 AM

## What's 4 Lunch Ladies?

Saturday, July 19

11:30 am

Please RSVP

Buca di Beppo Italian  
Restaurant

1609 E. Imperial Hwy.

Brea



PLEASE NOTE THIS IS ON A  
SATURDAY THIS MONTH SO THOSE  
OF YOU WHO CAN'T MAKE FRIDAY'S  
CAN JOIN US!!!  
RSVP!

## OUR BOOK GROUP

RESUMES IN  
SEPTEMBER



### Burrito Ministry

Saturday July 19, 2025 10am.

Please join us preparing or delivering  
burritos to those who are hungry.



### ~ SUNDAY BIBLE READINGS ~

#### July 6

Isaiah 66:10-14

Psalm 66:1-9

Gal 6:1-6,7-8

Luke 10:1-11,16-20

#### July 13

Deut 30:9-14

Psalm 25:1-10

Col 1:1-14

Luke 10:25-37

#### July 20

Gen 18:1-10

Psalm 15

Col 1:15-28

Luke 10:38-42

#### July 27

Gen 18:20-32

Psalm 138

Col 2:6-15, 16-19

Luke 11:1-13





## From the Board of Parish Education July 2025

Kids three years through eighth grade meet in Moerer Hall at 10 am. Visitors are always welcome!

**Kid's Summer Music:** Susan Wright and Denise Whitcher began the Kid's Summer Music program on June 1. After the Sunday 10:00 service the youth go to the Hall for refreshments and then back to the sanctuary for music. New rhythm blocks were purchased for the kids to use. They continue to learn the difference between beat and rhythm and also about whole notes, half notes, quarter notes and the rest symbols. On Father's Day, they sang together with dads in the congregation "Praise Ye the Lord, Hallelujah". See the pictures on the next page. The final class will be on August 24 where the kids will share all the songs they have learned in the Hall with a Potluck and Talent Show. Be sure to join us then.

**Offering:** Our Summer focus will be to help our neighbors by donating food for hungry people who are in our communities! Donations will be delivered to the Food Bank at First Lutheran Church in Fullerton. Let's surprise everyone with how much the kids can do to help the people who are struggling and will benefit from this service!

### **Compassion Day Camp---Vacation Bible School- Saturday, July 12- 9AM- 1:30PM**

- This summer we will have our 4<sup>rd</sup> and final Compassion Camp. It is a **One Day Saturday Day Camp!**
- Theme is "**Compassion Camp: Be Loved. Be Kind. Be You.**" Through the story of Pentecost, the youth will discover that we can show lovingkindness in our community and with the world. This world is vast, and there are people out there we may never meet and places we may never see. We can have compassion for all people and all of creation. Yes, we can!
- We encourage people to volunteer to help on this special day. We need help with food, snacks, leading crafts, games, and activities. What Fun!  
**Please invite friends and family to join us for "Compassion Camp" July 12.**

Please continue to pray for the spiritual growth of our youth and adults.

Parish Ed Team

# KID'S SUMMER music





# kIDS summer music

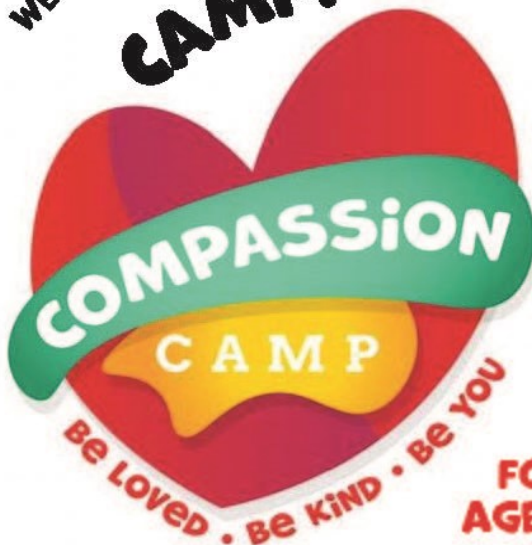
Make a joyful noise  
unto the Lord!

Learn about beat, rhythm and music

Sundays  
after church

11 am approximately  
June 1st - Aug 24th

WE NEED VOLUNTEERS  
FOR  
CAMP!



## DAY CAMP

**SATURDAY  
JULY 12**  
9 AM TO 1:30

**MUSIC!  
CRAFTS!  
GAMES!**

**FOR  
AGES 3 - ENTERING 6TH**



# EMANUEL LUTHERAN CHURCH 2025 COMPASSION DAY CAMP 9 am to 1:30 pm SATURDAY, JULY 12

Emanuel Lutheran Church  
150 N. Palm Street, La Habra, CA 90631  
email: churchinfo@elclh.org phone (562)691-0656

***“Compassion Camp—CHANGING THE WORLD  
WITH LOVINGKINDNESS BY BEING A GOOD SAMARITAN”***

Saturday, July 12 9 am-1:30 pm (includes lunch)  
Sunday, July 13 10 am Worship with singing performance  
by compassion camp kids

Children Ages 3 (potty-trained) through those entering 6th grade  
Youth & Adults Those entering 7th grade and up are welcome to volunteer

**Join us for Compassion Camp**  
**Changing the World with Lovingkindness by being a Good Samaritan**

**Please pre-register by Monday July 5, 2025**

**COST IS \$5 PER CHILD OR \$10 PER FAMILY**

**SCHOLARSHIPS AVAILABLE**

**TOTAL ENCLOSED \$ \_\_\_\_\_ APPLY FOR SCHOLARSHIP Yes / No**

NAME OF CHILD	AGE	GRADE ENTER- ING	Allergies

## ***EMERGENCY INFORMATION***

Parent/Guardian Names \_\_\_\_\_

Address \_\_\_\_\_ City \_\_\_\_\_ Zip \_\_\_\_\_

Home Phone \_\_\_\_\_ Cell \_\_\_\_\_ Email \_\_\_\_\_

Emergency Contact Name \_\_\_\_\_ Phone \_\_\_\_\_

Relationship of Emergency Contact to Child \_\_\_\_\_

In case of an emergency and we **cannot** reach you or an Emergency Contact person, does Emanuel Lutheran Church have your permission to make medical decisions for the above listed minor(s) until we are able to reach the parent or emergency contact person?

Yes /No (circle) \_\_\_\_\_ Date \_\_\_\_\_  
(parent/guardian signature)





# EMANUEL LUTHERAN CHURCH 2025 VACATION BIBLE SCHOOL

**9 AM - 1:30 PM SATURDAY, JULY 12**  
**“Compassion Camp—CHANGING THE WORLD  
WITH LOVINGKINDNESS**

Compassion Camp is where kids (3 years and potty trained through entering 6th grade) explore what it means to have compassion for others, ourselves, and the world. The Compassion Camp components bring the themes of compassion to life in unique and engaging ways for each participant as they explore how these themes relate to each session's scripture.

All entering 7th grade through adult are encouraged to volunteer with snacks, crafts, teaching a lesson, helping run games, or set-up/clean-up. Earn community service credit hours!

**If you are interested in being a volunteer helper, please fill out and return this form to Emanuel Lutheran Church 150 N. Palm Street, La Habra, CA 90631**  
**Email: [churchinfo@elclh.org](mailto:churchinfo@elclh.org) phone: (562) 691-0656**

Contact the church office for more information. God Bless!

## VBS Volunteer Sign Up Form

Name \_\_\_\_\_ Jr. High / High School / Adult (circle one)

Phone \_\_\_\_\_ Email: \_\_\_\_\_

*Preferred method of communication: call / text / email (circle preference)*

**Emergency Contact Name** \_\_\_\_\_

**Relationship to volunteer** \_\_\_\_\_ **Phone** \_\_\_\_\_

Volunteer interest(s):

- \_\_\_\_\_ Small Group Leader/Assistant
- \_\_\_\_\_ Food Servers Assistant Chef
- \_\_\_\_\_ Donate Food (head chef will contact you in July with food needs)
- \_\_\_\_\_ Registration Helper
- \_\_\_\_\_ Music and Opening
- \_\_\_\_\_ Games & Recreation
- \_\_\_\_\_ Crafts
- \_\_\_\_\_ Clean-up
- \_\_\_\_\_ Wherever I am needed



**Must be signed by parent/guardian for Volunteers under 18:**

In case of an emergency, and we **cannot** reach you or an Emergency Contact person, does Emanuel Lutheran Church have your permission to make medical decisions for the above listed minor(s) until we are able to reach the parent or emergency contact person?

Yes /No (circle) \_\_\_\_\_ Date \_\_\_\_\_



## JULY JOY CIRCLE JULY 21, 2025 9:30 AM - 11:00 AM

As previously mentioned we are currently looking at the Bible Study entitled, *Where Two or More are Gathered*. As we didn't get too far last month (it happens), we will complete this first section in July. If you missed in June, we will catch you up and you will have a chance to share your input. Everyone has a family, which results in wonderful sharing in this study. Please try out this loving caring group of women.

**We will not meet in August!!** When we resume the third Monday in September, we will continue in this same study. We will explore "Relationships that Sustain Us". Enjoy the short break and thank you all for your faithfulness in Joy Circle!!



### EASY WAYS TO SUPPORT EMANUEL FINANCIALLY

Thank you for your financial gifts to God through Emanuel Lutheran Church!!!

Below are 4 ways to give:

- Entryway offering plate
- Mail to the Church Office
- "Giving" link online at [www.elclh.org](http://www.elclh.org)
- Text dollar amount to 562-210-0007

Our bank has recently notified us how checks must be written in order to be accepted. We are asking for your assistance to avoid future checks being refused.

- Checks must be made payable to **EMANUEL LUTHERAN CHURCH** (full name written out)
- Checks are to be written using **blue or black ink only** (other colors not acceptable)
- Make sure the **number in the amount is the same as the amount written in words**



### TO WORSHIP WITH US ONLINE AND VIA LIVE STREAM, GO TO

- Emanuel's website: <http://elclh.org>
- YouTube: Emanuel Lutheran Church La Habra  
<https://www.youtube.com/channel/UC4Fu6qvPdYF2MM92JzoU9uA>
- Facebook: Emanuel Evangelical Lutheran Church  
<https://www.facebook.com/emanuel.lutheran.1>

**Closed captioning is available on both YouTube and Facebook.  
Visit Emanuel's website or find us on Instagram**

## Emanuel Lutheran Preschool Now Enrolling



Emanuel Lutheran Preschool is now enrolling students!

- Our Preschool is open all year-round.
- We are a state licensed, non-profit organization dedicated to providing an atmosphere of love and acceptance in which all children are encouraged to develop to their fullest potential.
- Our teachers are dedicated to support and inspire your child's progress.
- Daily activities include motor development, social skills and language skills to benefit your child at their appropriate level.

If you or someone you know is looking for child care reach out to Preschool Director Jonine Sadders (562)694-5316 or email [EmanuelPreschoolLaHabra@hotmail.com](mailto:EmanuelPreschoolLaHabra@hotmail.com)



### TO WORSHIP WITH US ONLINE AND VIA LIVE STREAM, GO TO

- Emanuel's website: <http://elclh.org>
- YouTube: Emanuel Lutheran Church La Habra  
<https://www.youtube.com/channel/UC4Fu6qvPdYF2MM92JzoU9uA>
- Facebook: Emanuel Evangelical Lutheran Church  
<https://www.facebook.com/emanuel.lutheran.1>



Closed captioning is available on both YouTube and Facebook.  
Visit Emanuel's website or find us on Instagram (emanuellahabra) for upcoming events

### Altar Flowers Donation

We invite you to provide flowers for the altar on any Sunday Service! Sign up in the Narthex. On the Monday before flowers are expected, call Blooming Hills to order flowers. Cost will be \$65.00 paid to Blooming Hills Florist, (562) 690-3347. Please take the flowers home after the service on Sunday, or they will be taken to a shut in that week.



### ~ PRAYER ~

**GOD'S WORD TELLS US IT IS THE  
MOST POWERFUL FORCE GOD  
HAS ENTRUSTED TO US!**

*Have a prayer request for  
yourself or others?*

Call or email the church office and we will share it with the Prayer Team.

*Want to make time to pray  
with others?*

Consider joining the Prayer Group in person in the Youth Room or via Zoom 8:30-9:30 AM Saturday mornings.

*Want to be part of the Prayer  
Team?*

Contact the church office.  
**Celebrating 12 years of meeting  
and praying together**



# PRAYER LIST

## PRAY FOR ONE ANOTHER JULY 2025

\*\*\* Save this for reference throughout the month. \*\*\*

*"Be joyful in hope, patient in affliction, and faithful in prayer." Romans 12:12*

### Special Prayer Focus for This Month

~ For June, join us in praying that the community may know Christ. We believe that man's greatest need is to hear and believe in the truth of the gospel.

### Continuing Prayers

- ~ Dan Toussaint
- ~ Celeste Templeton
- ~ Justin Hambly and family, Maiju Hessel's grandson in law
- ~ Cathy Spangler
- ~ Annie Marquez, Lilly's niece

If you have Prayer requests for the next eight weeks, please contact the Church office to add names.

### Assisted Living Centers/Homebound

- ~ Shirley Jordan – Park Vista
  - ~ Lee Reitzel – Emerald Court
- ~ Margaret Roberts

### Friends and Family to Remember

- ~ Lin Baesler, wife of Pastor Ron Baesler

### Remembering Those Who Have Died

### Prayers of Thanksgiving

- ~ For all God's blessings, those we see and so many big and small ways God provides for our needs, often before we even know our need.
- ~ Thank You, God, for those who are here to share these blessings this month, for the generosity of our hosts that make this possible. Bless those who are here and those who are in our hearts, and all those who are not as fortunate.

*If you have prayer concerns to add to Emanuel's list, please contact the church office at (562)691-0656.*

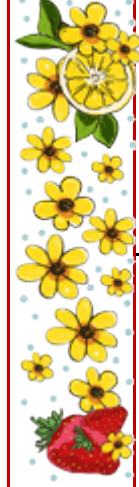
*Once a month, names will be removed from the list that have been in print at least eight consecutive weeks (except those who request extended prayer). You are welcome to re-submit any names removed from the list, or you may remove a name at any time by contacting the church office. Thank you.*







# JULY 2025



SUNDAY	MONDAY	TUESDAY	WEDNESDAY	THURSDAY	FRIDAY	SATURDAY																																																								
<b>June 2025</b> <table><tr><td>S</td><td>M</td><td>T</td><td>W</td><td>T</td><td>F</td><td>S</td></tr><tr><td>1</td><td>2</td><td>3</td><td>4</td><td>5</td><td>6</td><td>7</td></tr><tr><td>8</td><td>9</td><td>10</td><td>11</td><td>12</td><td>13</td><td>14</td></tr><tr><td>15</td><td>16</td><td>17</td><td>18</td><td>19</td><td>20</td><td>21</td></tr><tr><td>22</td><td>23</td><td>24</td><td>25</td><td>26</td><td>27</td><td>28</td></tr><tr><td>29</td><td>30</td><td></td><td></td><td></td><td></td><td></td></tr></table>	S	M	T	W	T	F	S	1	2	3	4	5	6	7	8	9	10	11	12	13	14	15	16	17	18	19	20	21	22	23	24	25	26	27	28	29	30							1	2 9a Bible Study (L/Z) 10a Bridge Club (H) 7:30p Al-Anon (C)	3 6p District 18 (H) 7-9p HOF (4)	4 6-10:30p HOF (S) 7:30-8:30p HOF (CR 2, 4, Y) 8p AA (H)	5 8a Men's Breakfast 8:30a Prayer Group (Y,Z) 9:30-11a HOF (4) 4-10p HOF (YR, K) 4:30-7p Narc-Anon (C)														
S	M	T	W	T	F	S																																																								
1	2	3	4	5	6	7																																																								
8	9	10	11	12	13	14																																																								
15	16	17	18	19	20	21																																																								
22	23	24	25	26	27	28																																																								
29	30																																																													
6 9:30a-12:30p HOF (YR) 10a Worship Service (S) 11a Kids Summer Music 12:30-7p HOF(ALL)	7 10a Stephen Ministry (c) 7-9p HOF (S)	8	9 9a Bible Study (L/Z) 10a Bridge Club (H) 7:30p Al-anon (C)	10 7-9p HOF (4)	11 5-6p VBS Prep 6-10:30p HOF (S) 7:30-8:30p HOF(CR 2, 4, Y) 8p AA (H)	12 8:30a Prayer Group (Y,Z) 9:00a-1:30 VBS 9:30-11a HOF (4) 4:30-7p Narc-Anon (C) 6p-12a HOF (4)																																																								
13 9:30a-12:30p HOF (YR) 10a Worship Service (S) 11a Kids Summer Music 12:30-7p HOF(ALL)	14 9:30a Joy Circle (H) 7-9p HOF (S)	15 <b>Good News Deadline</b>	16 9a Bible Study (L/Z) 10a Bridge Club (H) 7:30p Al-Anon (C)	17 7-9p HOF(4)	18 6-10:30p HOF (S) 7:30-8:30p HOF (CR 2, 4, Y) 8p AA (H)	19 8:30a Prayer Group (Y,Z) 10a Burrito Ministry (H) 11:30a What's 4Lunch Ladies 4:30-7p Narc-Anon (C)																																																								
20 9:30a-12:30p HOF (YR) 10a Worship Service (S) 11a Kids Summer Music 12:30-7p HOF(ALL)	21 7-9p HOF (S)	22	23 9a Bible Study (L/Z) 10a Bridge Club (H) 7:30p Al-Anon (C)	24 7-9p HOF (4)	25 6-10:30p HOF (S) 7:30-8:30p HOF (CR 2, 4, Y) 8p AA (H)	26 8:30a Prayer Group (Y,Z) 9:30-11a Hof (4) 4:30-7p Narc-Anon (c) 6p-12a HOF (4)																																																								
27 9:30a-12:30p HOF (YR) 10a Worship Service (S) 11a Kids Summer Music 12:30-7p HOF(ALL)	28 7-9p HOF (S)	29	30 9a Bible Study (L/Z) 10a Bridge Club (H) 7:30p Al-Anon (C)	31 7-9p HOF (4)	<table><tr><td colspan="7"><b>August 2025</b></td></tr><tr><td>S</td><td>M</td><td>T</td><td>W</td><td>T</td><td>F</td><td>S</td></tr><tr><td></td><td></td><td></td><td></td><td></td><td>1</td><td>2</td></tr><tr><td>3</td><td>4</td><td>5</td><td>6</td><td>7</td><td>8</td><td>9</td></tr><tr><td>10</td><td>11</td><td>12</td><td>13</td><td>14</td><td>15</td><td>16</td></tr><tr><td>17</td><td>18</td><td>19</td><td>20</td><td>21</td><td>22</td><td>23</td></tr><tr><td>24</td><td>25</td><td>26</td><td>27</td><td>28</td><td>29</td><td>30</td></tr><tr><td>31</td><td></td><td></td><td></td><td></td><td></td><td></td></tr></table>	<b>August 2025</b>							S	M	T	W	T	F	S						1	2	3	4	5	6	7	8	9	10	11	12	13	14	15	16	17	18	19	20	21	22	23	24	25	26	27	28	29	30	31							 <b>SUMMER VACATION</b>
<b>August 2025</b>																																																														
S	M	T	W	T	F	S																																																								
					1	2																																																								
3	4	5	6	7	8	9																																																								
10	11	12	13	14	15	16																																																								
17	18	19	20	21	22	23																																																								
24	25	26	27	28	29	30																																																								
31																																																														

<b>Emanuel Lutheran Church:</b> 150 N. Palm Street, La Habra, CA 90631 • Phone 562-691-0656, www.elch.org • <b>Preschool:</b> 562-694-5316 <b>Alanon</b> meets in Hope Center, Wednesday @ 7:30 pm, AA (Alcoholics Anonymous) meets in Moerer Hall Monday @ 7:30 pm & Friday @ 8pm <b>Legend:</b> C: Hope Center Classroom; CH: Chapel; F: Fireside Room; H: Moerer Hall; L: Hope Center Library; S: Sanctuary; Y: Youth Room; Z: Zoom						
--	--	--	--	--	--	--

**BOOK OF PHILIPPIANS**  
**WED 9-10 AM IN THE LIBRARY**  
**\*\*NO EXPERIENCE NEEDED!!\*\***



We are reading the book of Philippians. Come join us in the Emanuel library 9 a.m. Wednesday. Call or email the church office at [churchinfo@elclh.org](mailto:churchinfo@elclh.org) to receive the Zoom link if you can not make it in person. All you need is a computer, tablet or smartphone.

**CHRIST IN OUR HOME**  
**JULY/AUG/SEPT**  
**NOW AVAILABLE**

This quarterly devotional resource encourages us to live out our faith daily. Each reflective reading is accompanied by a daily scripture reference and prayer for the day that follows the Revised Common Lectionary. Booklets are available in the church entryway or office. Email [churchinfo@elclh.org](mailto:churchinfo@elclh.org) if you would like a copy mailed to you.



**Bible Quiz**

A few Bible books have only one chapter. Which of the following is not among them?

- A. Obadiah
- B. Philemon
- C. 1 John
- D. 2 John
- E. 3 John
- F. Jude

Answer: C

# Kid's Korner



## BY THE SEASHORE

The sea and its creatures are evidence of God's intention and purpose in creation.

Directions: Unscramble the words. Then copy the circled letters in order below to complete Psalm 104:24-25, NIV.



DASN  
LHSELS  
USN  
ESEDALS  
BHECA  
LALUBMER  
WRTEA  
FRUS  
VWSEA

□ □ □  
□ □ □  
□ □ □  
□ □ □  
□ □ □  
□ □ □



How many are your works, Lord!  
In wisdom you made them \_\_\_\_\_;  
the earth is full of your creatures.  
There is the \_\_\_\_\_, vast and spacious,  
teeming with \_\_\_\_\_ beyond number —  
living things both large and small.  
Psalm 104:24-25, NIV



## No kidding

Whatever our age, God calls us to model holy living for others.



Directions: Match the animal young with its parent. Then write the letter answers in order below to complete 1 Timothy 4:12, NIV.



- |                 |                   |            |              |
|-----------------|-------------------|------------|--------------|
| 1. ___ bear     | 9. ___ monkey     | A. fry     | I. hatchling |
| 2. ___ frog     | 10. ___ platypus  | B. fawn    | K. foal      |
| 3. ___ owl      | 11. ___ alligator | C. gosling | L. owlet     |
| 4. ___ horse    | 12. ___ giraffe   | D. cub     | M. puggle    |
| 5. ___ kangaroo | 13. ___ goose     | E. kid     | N. joey      |
| 6. ___ deer     | 14. ___ swan      | F. cygnet  | O. polliwog  |
| 7. ___ goat     | 15. ___ dog       | G. infant  | P. puppy     |
| 8. ___ fish     |                   | H. calf    |              |

"\_on't let any\_ne \_oo\_ down o\_ you \_ecaus\_  
you\_re youn\_, but set an exa\_ple for the bel\_evers  
in spec\_, in \_onduct, in love, in \_aith and in \_urity."

1 TIMOTHY 4:12, NIV

Answers: D, O, L, K, N, B, E, A, G, M, I, H, C, F, P